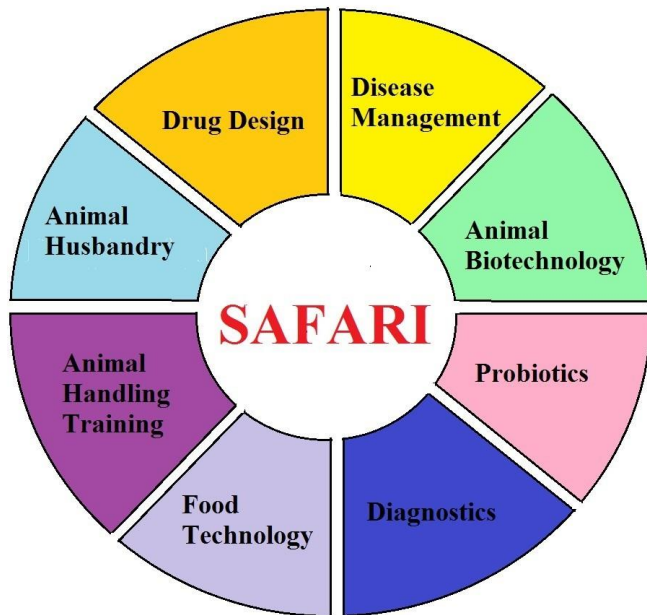


## Research Areas

The key areas of research and innovation in the centre include Biotechnology, Biochemistry and Molecular Biology, Microbiology and Food Technology.

### SAFARI Thematic areas

1. Design and drug development
2. Improvement of disease management
3. Genetic engineering
4. Molecular characterization of endangered species



## PARTNERS



**AUC:** African Union Commission  
**PAU:** Pan African University  
**PAUSTI:** PAU Institute of Basic Sciences, Technology and Innovation



**JKUAT:** Jomo Kenyatta University of Agriculture & Technology



**JICA:** Japan International Cooperation Agency

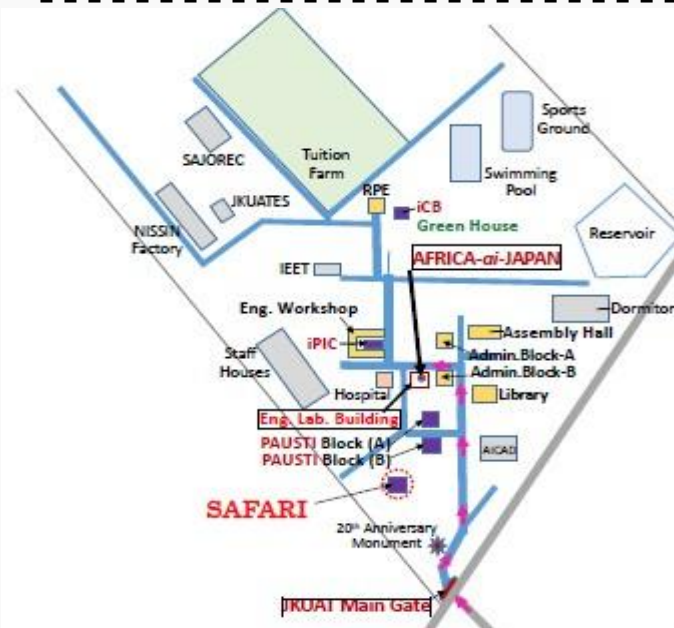


# SAFARI

Small Animal Facility for Research and Innovation



**For General Enquiries, Please Contact:**  
 AFRICA-ai-JAPAN Project Office  
 JKUAT  
 P.O Box 62000-00200 Nairobi, Kenya  
**2nd Floor, Engineering Laboratory Building (ELB 213)**  
 Email: [jicapausti@jkuat.ac.ke](mailto:jicapausti@jkuat.ac.ke), [icmob@jkuat.ac.ke](mailto:icmob@jkuat.ac.ke)  
 Mobile: +254(0)770-434-375  
 Website: <http://jkuat.ac.ke/projects/africa-ai-japan/>



2018

Innovation Center for Molecular Biology and Biotechnology

## About SAFARI

SAFARI (Small Animal Facility for Research and Innovation) was implemented by a team from the Innovation Centre for Molecular Biology and Biotechnology through technical support from the AFRICA-ai-JAPAN project.

It aims to offer accessible quality training and research in the use of small animals in order to produce innovations in the fields of human and animal health sciences and other applied sciences to improve health, productivity and overall wellbeing.



JKUAT Chairman of Council, Prof. Paul Kanyari Njuki and JICA Kenya Chief Representative, Keiko Sano officially open the Small Animal Facility for Research and Innovation (SAFARI)

### Vision:

To be a centre of excellence in small laboratory animal training, research and innovation

### Mission Statement:

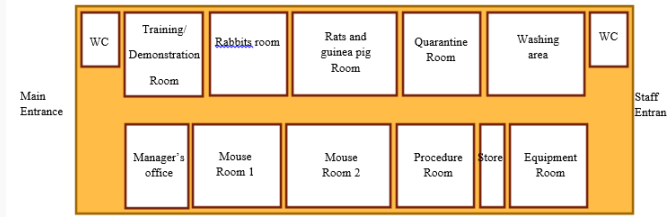
- ◇ Provide quality husbandry and veterinary care to animals
- ◇ Assist the faculty in their mission of quality research with respect to the use of laboratory animals.
- ◇ Act as a resource centre for the faculty on all issues relating to laboratory animals.
- ◇ Educate and train staff, students and researchers to promote responsible use of laboratory animals for the benefit of mankind.

## Small Animal Rearing

The animal facility houses a variety of laboratory animals such as mice, rats, guinea pigs and rabbits. The facility undertakes to sustain mouse, rat, rabbit and guinea pig breeding colonies, in addition to their care and maintenance in line with the Institutional Care and Use committee and Animal Welfare Act.

The animal house has a number of rooms to house the animals. Experimental animals coming in will be isolated in the quarantine room for 21 days to ensure their quality of health. All experiments are conducted in the procedure room.

### SAFARI Layout



### Sustainability

In order to achieve sustainability, SAFARI charges users for the purchase of teaching or research animals, levy bench fees for research carried out within the facility and offer continued training packages in the areas of animal care and use for teaching and experimental research purposes. Funds will be utilized for the running costs of SAFARI including the purchase, breeding, care, feeding, treatment and disposal of the laboratory animals.

### SAFARI fees charge (as of Feb 2018)

Animal	Price per animal (\$)	Per diem/ cage (\$)
MICE	2.5	1.25
RATS	3	1.25
GUINEA PIGS	4	1.25
RABBITS	10	1.25

## Capacity Building

SAFARI advances the broad goal of enhancing the capacity for high quality research and innovation within JKUAT. The training equips the young and upcoming researchers with the practical skills on small animals health care, nutrition, animal experimental methods, biohazard risk management and safety, laboratory management and oversight, animal diseases and ethical issue during research activities. The centre is also currently carrying out breeding for small animals in the SAFARI facility to be able to provide quality small animals for research within JKUAT and other research station. Training opportunities is provided twice a year or upon request to all first time potential users of SAFARI prior to engaging in animal handling and experiments (as of Feb 2018).

TITLE OF TRAINING	COST (per person)
Care and management of laboratory animals.	Ksh 10,000
Animal experimental methods	Ksh 5,000
Biohazard risk management and safety	Ksh 5,000
Laboratory management and oversight.	Ksh 5,000
Ethics and scientific integrity	Ksh 5,000



Animal handling training